

CHAIR BASES

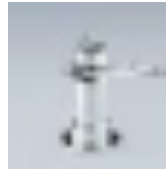
HYDRAULIC CHAIR BASES

LOW INITIAL HEIGHT MODEL **LOW-HEIGHT MODEL**

With a design that is suitable for both seniors and children, the initial height is low for ease of sitting. Recommended also for stylists of shorter stature



SP-YFL
FLAT BASE C
(HAIRLINE)
INITIAL HEIGHT: 318mm
STROKE: 142mm



SP-FM
FLOOR MOUNT BASE
(CHROME)
INITIAL HEIGHT: 316mm
STROKE: 142mm

BASIC MODEL **BASIC MODEL**

The most basic type, providing both ease of sitting and providing service

*Initial height can be raised to 370mm as a customisable option at additional cost. Specify when ordering



SP-YE
(HAIRLINE)
INITIAL HEIGHT: 349mm
STROKE: 142mm



SP-YEBC
(BASE PLATE:
BLACK COATING)
INITIAL HEIGHT: 349mm
STROKE: 142mm



SP-YEB
(BLACK COATING)
INITIAL HEIGHT: 349mm
STROKE: 142mm



SP-YC
(CHROME)
INITIAL HEIGHT: 345mm
STROKE: 142mm



SP-YA
(GRIND FINISH)
INITIAL HEIGHT: 341mm
STROKE: 142mm



SP-YH
(GRIND FINISH)
INITIAL HEIGHT: 341mm
STROKE: 142mm



SP-YAB
(BLACK COATING)
INITIAL HEIGHT: 341mm
STROKE: 142mm

LONG STROKE MODEL **LONG STROKE MODEL**

This product can be raised to a high position, making it optimal for providing service while standing, or for combining with a shampoo chair. It is also highly recommended for taller stylists, enabling them to work more easily.



SP-AC
(CHROME)
INITIAL HEIGHT: 380mm
STROKE: 175mm



SP-AD
(MAT)
INITIAL HEIGHT: 380mm
STROKE: 175mm



SP-AJ
(WOODY BROWN
COATING)
INITIAL HEIGHT: 380mm
STROKE: 175mm



SP-202C
(WHITE COATING)
INITIAL HEIGHT: 380mm
STROKE: 175mm



SP-AI
(IVORY COATING)
INITIAL HEIGHT: 380mm
STROKE: 175mm



SP-AH
(BROWN COATING)
INITIAL HEIGHT: 380mm
STROKE: 175mm

ELECTRO HYDRAULIC CHAIR BASES

LONG STROKE MODEL **LONG STROKE MODEL**

The long stroke enables taller stylists to work more smoothly and efficiently while keeping the customers comfortable throughout. One-touch operation lets the stylist raise the chair smoothly without repeatedly having to pump your foot.



SP-CHDN
FLOOR MOUNT
BASE
(SILVER METALLIC
COATING)
INITIAL HEIGHT: 345mm
STROKE: 285mm



SP-PBN
(DARK GREY)
INITIAL HEIGHT: 340mm
STROKE: 280mm



AN-BCES
INITIAL HEIGHT: 410mm
STROKE: 205mm
COLOUR: SILVER



AN-BCEB
COLOUR: BLACK



AN-BCEW
COLOUR: WHITE

CLASSIC E **CLASSIC E**

Engineered to show our classic barber's chair designs off to full advantage, this chair base is compatible with almost all models*, meaning electric comfort can be added to favourite chairs in 3 colour options.

*Not available for DAINTY (Model No. 405)



The Takara Belmont wash units are not typical wash units, but pursue comfort and operability for both the customers and the hairstylists. This unprecedented wash units accords surprising comfort.

BACKWASH UNITS

YUME SERIES

RSIII SERIES

NRS & RS SERIES

More information
<http://www.takarabelmont.co.jp/guide/bscny/sharpen/>



Provides the ultimate in reclining comfort and relaxation.
Ideal for the most luxury shampoo treatment delivering a dream-like experience.

YUME

Cocooned in comfort — Yume shampoo
Taking comfort to a whole new level and surpassing all prior experience at the basin, a new style of shampoo is born for the forward-thinking salon.

EX-YMXL/SU-YM SH24
W760×D1985×H625-975
(HEIGHT OF NECK POSITION: 600-950)mm
SEAT: DARK BROWN [SH24]
FOOT SWITCH: LEFT SIDE



SEAT (YUME and YUME DX)

BLACK [SH1]	IVORY [SH15]	DARK BROWN [SH24]
BROWN [NL12]	CAMEL [NL22]	

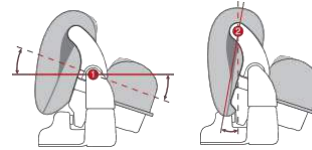
FEATURES (COMMON TO THE YUME SERIES)

Comfortable neck device
Two head cushions and a neck cushion provide support with good balance on three points, reducing neck strain. Maintains optimal position even during long treatments.



Diagram of the mechanism

Two-axis rotating structure fits the neck regardless of any shape and body type.



UPGRADE OPTION

ADJUSTABLE SHOWER HEAD
This newly-developed adjustable shower head takes optimal water volume and pressure into consideration, and offers a high degree of user friendliness.



The product can be switched between shower and low-splash foaming mode, depending on the desired treatment.

ACCESSORIES

YUME WAGON
(formerly the ESPOIR WAGON)
SR-ES WH [WHITE]
SR-ES WD [WOOD]
W380×D440×H835mm



Tilts 360° allowing free movement
YUME STOOL
EX-YMST
W415×D415×H485-672mm



Tilts forward and back
ESPOIR STOOL
EX-ESST
W360×D390×H474-680mm



Tilts forward and back
M-STOOL
EX-MST
W360×D443×H660-705mm



YUME DX

Ahead of the times — the relaxation of the future
Total beauty service menus available with YUME DX. Using only 10m², a variety of treatments can be provided in a comfortable space.

EX-YM2XLA/SU-YM2AM SH15
W760×D2000×H990 (HEIGHT OF NECK POSITION: 610-950)mm (without rotation)
W1670×D1500×H650-990mm (with 90° rotation)
Minimum space requirements:
W2700×L3000mm (with 90° rotation)
SEAT: IVORY [SH15]
SEAT ROTATION: CLOCKWISE
FOOT SWITCH: LEFT SIDE



*Seat rotation to be selected from clockwise or counter-clockwise rotation
COUNTER-CLOCKWISE ROTATION WITH RIGHT SIDE FOOT SWITCH: EX-YM2RA/SU-YM2AM
COUNTER-CLOCKWISE ROTATION WITH BOTH SIDES FOOT SWITCH: EX-YM2RAF/SU-YM2AM



90° rotatable seat



Adjustable leg rest



Removable headrest



One-touch foot switch

OPTIONS

COMMON TO THE YUME SERIES

•YUME SHAMPOO CAPE (PEARL WHITE)	EA-YMCP
EXCLUSIVE FOR BACKWASH BASIN (YUME OASIS excepted)	
•NECK CUSHION ¹	EA-YMN
•HEAD CUSHIONS ¹	EA-YMH2

EXCLUSIVE FOR SIDEWASH BASIN (YUME ESPOIR, YUME SWING only)

•SIDE NECK CUSHION ²	EA-NBN
EXCLUSIVE FOR STANDARD NECK DEVICE	
•SPA NECK CUSHION*	EA-ESSPN
EXCLUSIVE FOR SPA NECK DEVICE	
•SPA NECK DEVICE*	EA-ESSPD

EXCLUSIVE FOR YUME

•LEG REST COVER	EA-YMVCL
-----------------	----------

EXCLUSIVE FOR YUME DX

•LEG REST COVER	EA-YM2VCL
•BACKREST TOWEL COVER	EA-YM2TCB
•HEADREST TOWEL COVER	EA-YM2TCM

EXCLUSIVE FOR YUME ESPOIR

•LEG REST COVER FOR BASIC LINE	EA-ESBVCL
FOR PREMIUM LINE	EA-ESPVCL
FOR LUXURY LINE	EA-ESLVCL
•ABOVE-FLOOR PIPING COVER & KIT	
ABOVE-FLOOR PIPING KIT L(R)	EA-ESPL(R)
ABOVE-FLOOR PIPING COVER A-L(R)	EA-ESPAL(R)
ABOVE-FLOOR PIPING COVER B	EA-ESPB
ABOVE-FLOOR PIPING COVER C	EA-ESPC

EXCLUSIVE FOR YUME 和 (Nagomi)

•BACKREST VINYL COVER	EA-YMIXVCB
•FLOOR SHEET FOR FOOTREST	EA-YMIXIFS
•REPLACEMENT PIPING COVER & KIT	
REPLACEMENT PIPING COVER	EA-YMIXIPC
REPLACEMENT PIPING KIT H (for standing operation)	EA-YMIXIPKH
REPLACEMENT PIPING KIT L (for seated operation)	EA-YMIXIPL

¹Included with backwash unit ²Included with sidewash unit

YUME ESPOIR

Compact, stylish, and space efficient
A standard model that supports a wide range of techniques and allows the chair design to be selected.

EX-ESSSXHKS/SC-ESBFHS/SU-ESBF NL5/EA-ESBF

W650×D1985×H930 (HEIGHT OF NECK POSITION: 800)mm
SIDEWASH UNIT
CHAIR: BASIC LINE
LEG REST: FIXED
BODY COVER: LUXE SILVER [S]
SEAT: BLACK [NL5]
*Stool sold separately



BASIC LINE



CHAIR: BASIC LINE
LEG REST: FIXED
BODY COVER: LUXE SILVER [S]
SEAT: BLACK [NL5]
*Adjustable leg rest also available

PREMIUM LINE

A 5 cm wider seat and new cushion material realise cocooned comfort.

FIXED LEG REST VERSION



CHAIR: PREMIUM LINE
LEG REST: FIXED
BODY COVER: BLACK [B]
SEAT: IVORY [SH15]

ADJUSTABLE LEG REST VERSION



CHAIR: PREMIUM LINE
LEG REST: ADJUSTABLE (Synchronised movement)
BODY COVER: LUXE SILVER [S]
SEAT: DARK BROWN [SH24]

YUME SWING

The basin slides to enable full-flat shampoo, enhancing the quality of one-stop service provided.



EX-YMSBNYM/EX-YMSAR/EA-YMSPY

W1348×D1024×H850 (HEIGHT OF NECK POSITION: 800)mm
BACKWASH UNIT
SLIDE ARM FOR REAR LAYOUT
UNDERFLOOR PIPING COVER

VARIATIONS

BASIN	SLIDE ARM	PIPING COVER
SIDEWASH BASIN EX-YMSBNS5	FOR REAR LAYOUT EX-YMSAR	Wall piping EA-YMSPK
	FOR FRONT LAYOUT EX-YMSAF	Underfloor piping EA-YMSPY Above-floor piping EA-YMSPU
BACKWASH BASIN EX-YMSBNYM	FOR REAR LAYOUT EX-YMSAR	Wall piping EA-YMSPK
	FOR FRONT LAYOUT EX-YMSAF	Underfloor piping EA-YMSPY Above-floor piping EA-YMSPU
REVERSE SLIDE LAYOUT* BACKWASH BASIN EX-YMSBNYM2	FOR REVERSE SLIDE REAR LAYOUT EX-YMSAR2	Wall piping EA-YMSPK2
	FOR REVERSE SLIDE FRONT LAYOUT EX-YMSAF2	Underfloor piping EA-YMSPY2 Above-floor piping EA-YMSPU2

*The "reverse slide layout" specifications that allow the basin to be located on left side
*For the reverse slide layout, select the exclusive basin, slide arm, and piping cover.
*A reverse slide layout for the side basin is not available.
See pages 6 - 15 for chairs that are recommended for use with these products.
*Chair sold separately

Basin can be selected according to the shampoo style.

BACKWASH BASIN



This basin is ideal for shampooing and spa treatments performed from behind the customer.
HEIGHT OF NECK POSITION: 800mm ONLY

SIDEWASH BASIN



This basin is ideal for shampooing from the side in standing posture and for spa treatment from behind the customer in seated posture.

*The height of neck position to be selected at purchase from 800mm (H), 775mm (ML) or 750mm (L) according to preference.
For performing treatment from the rear, please select the 800mm (H) type.



This product offers treatment space from between the chair and the basin.

The separated chair unit and basin unit allow stylist to stand between the basin and the chair to perform services such as shoulder massages.

SEAT (Basic line)

WHITE [NL1]	DARK BROWN [NL24]
BLACK [NL5]	CAMEL [NL22]

SEAT (Premium line)

IVORY [SH15]	DARK BROWN [SH24]
MAROON [SH7]	BLACK [SH1]

BODY COVER

BLACK [B]	LUXE SILVER [S]
-----------	-----------------

The basin can be selected according to the shampoo style.



BACKWASH BASIN SIDEWASH BASIN

Height of neck position appropriate for a seated position
The height of neck position is set at 800mm, appropriate for providing services from behind the customer while stylist is seated.

Two different layouts that enable the basin position to be selected and exclusive cabinets are available.
FRONT LAYOUT *Minimum space requirements: W2200×L3000mm.



Styling position

Shampooing position

REAR LAYOUT *Minimum space requirements: W3000×L2200mm at minimum.



Styling position

Shampooing position

Cabinet with mirror exclusive for front layout

CB-YMSF
W700×D500×H2010mm



High-capacity storage space

Side cabinet exclusive for rear layout

CB-YMSR
W565×D305×H710mm



Two drawers Shelf

YUME SERIES

Provides the ultimate in reclining comfort and relaxation.
Ideal for the most luxury shampoo treatment delivering a dream-like experience.

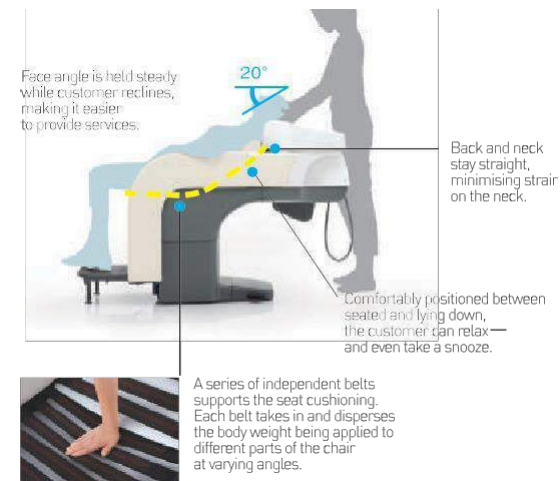
YUME 和(Nagomi)

A compact, space-saving model that is both comfortable and efficient

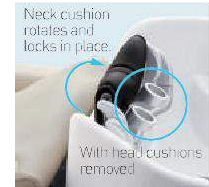
AY-YMIXHGL^{*}
W660×D1640×H930
(HEIGHT OF NECK POSITION: 900)mm
FOR STANDING OPERATION
SEAT: WHITE [GL1]



Newly-conceived reclining position provides both comfort and efficiency.



Specifications ensure work efficiency.



The new neck device makes shampooing easier even on customers wearing perm rods.



The foot pedal enables the recline of the chair to be quickly adjusted to the most suitable position.

Footrest assists customers who might need it.

For shorter customers or others who might need it, this slide-out footrest can make it easier to get in and out of the chair smoothly and to sit comfortably.



Regular position For shorter customers

Height of neck position
For seated operation (EX-YMIXIL): 820mm
For standing operation (EX-YMIXIH): 900mm
^{*}Selectable at purchase

SEAT
WHITE [GL1] BLACK [GL2]
DARK BROWN [GL3] MAROON [GL4]

OPTION
BOOSTER SEAT CUSHION
EA-YMIXIS

YUME OASIS

Carrying comfort around for greater freedom for customers and the salon. The comfort that YUME offers and the flexibility of OASIS realise high-quality one-stop service upgrades from an ordinary seat to a premium seat.



BACKWASH UNIT
EX-OAYMYM-CG
W500×D596×H931
(HEIGHT OF NECK POSITION: 900)mm
BODY COVER: CHAMPAGNE GOLD [CG]

SIDEWASH UNIT
EX-OAYMSS-NV
W500×D596×H849
(HEIGHT OF NECK POSITION: 800)mm
BODY COVER: DEEP NAVY [NV]

FLOOR UNIT
EX-OAYM-F
W447×D607×H135mm

^{*}Chair and floor unit sold separately



OPTIONS
CLEANING NOZZLE EA-OACL
MORTAR EMBEDDING FRAME (required for mortar floor) EA-OAFWYM
FLOOR MATERIAL KIT (white [WH], grey [GR]) EA-OAYMFK-WH[GR]
EXCLUSIVE FOR BACKWASH BASIN
NECK CUSHION¹ EA-OAYMYMN
HEAD CUSHIONS² EA-YMH2
EXCLUSIVE FOR SIDEWASH BASIN
SIDE NECK CUSHION² EA-OAYMSSN
¹Included with backwash unit ²Included with sidewash unit

Chairs recommended for use in combination BRAMU →P.7 LUAR →P.13 VINTAGE ALT+ →P.14

Create private time and space with freedom

The high-quality one-stop service takes communication between stylists and customers to the next level. Your salon customers are sure to become loyal customers who will return frequently and for many years to come.



YUME OASIS x BRAMU (Full-flat posture)



YUME OASIS x VINTAGE ALT+ (Semi-flat posture)

RSIII SERIES

Not just to shampoo their hair—Give them luxurious comfort.
Japanese quality and features based on our extensive research provide a better shampoo experience.

RS PRIME

A balance of comfort and ease of use.
A new standard for backwash unit

AY-P069X/AY-S195X
W592×D1254×H893-1012
(HEIGHT OF NECK POSITION: 864-951)mm
FRONT COVER: BLACK
SEAT: BLACK [NL5]



SEAT
WHITE [NL1] BLACK [NL5]
DARK BROWN [NL2] RED BROWN [NL3]
FRONT COVER
BLACK WHITE



Basin design ideal for shampoo-reason 1
To improve access to a customer's nape, a key comfort spot, the back of the basin is lower than the front. This design promotes more effective shampooing and massaging.

Basin design ideal for shampoo-reason 2
With a larger and deeper basin than on previous models and shampoo fixtures that leave plenty of space in the centre, the RSIII makes the stylist's job easier than ever.

UPGRADE OPTION
ADJUSTABLE SHOWER HEAD
Shower mode Low-splash foaming mode

OPTIONS
EXCLUSIVE NECK CUSHION^{*} EA-RS3N
BACKREST COVER FOR RS ELITE EA-RS3BLONG
BACKREST COVER FOR RS PRIME EA-RS3PLITE
LEG REST COVER FOR RS ELITE EA-COVCL
REPLACEMENT FLOOR SHEET EA-RS3FS
ABOVE-FLOOR PIPING KIT EA-RS3P
FLOOR FOOTREST EA-FS1
BOOSTER SEAT CUSHION EA-NRSS 99
^{*}Included with main unit

NRS & RS SERIES

Compact, stylish, and highly functional, it makes extremely effective use of space.

NRS SORA

Full electrically-operated seat that fits perfectly to customer physiques

EX-SORWLX-B/SU-SORSH¹
W710×D1910×H965
(HEIGHT OF NECK POSITION: 900)mm^{*}
BODY COVER: BLACK [B]
SEAT: BLACK [SH1]
ARMREST GRIP: WOOD



ARMREST GRIP
VINYL (black, [P]) WOOD (natural wood, [W])
^{*}Natural wood is used, so some variations may occur in patterns and colour.

SEAT
PEARL BEIGE [CN21] CAMEL [SH10] BLACK [SH1]
DARK BROWN [SH24] WHITE [SH8]
BODY COVER
BLACK [B] WHITE [W]

NRS SEPARATE

Slim and stylish wash unit fits to any salon design.

EX-NRS2B-B
EX-NRS2B-W
W440×D515×H965
(HEIGHT OF NECK POSITION: 900)mm



OPTIONS (for SORA)
BOOSTER SEAT CUSHION EA-SORS SH1/SH8/SH10/SH24/CN21
BACKREST COVER EA-SORVCB
LEG REST COVER EA-SORVCL
NECK CUSHION^{*} EA-NRSN2
SHAMPOO CAPE (common to NRS and RS series) EA-RSCW (WHITE) EA-RSCO (ORANGE) EA-RSCBD (BLACK WITH WET GUARD)
^{*}Included with main unit

RS SWING

By swinging the basin to the left or right, the RS SWING transforms a styling area into a shampoo area.

EX-RS2ZDB13
W977×D470×H951
(HEIGHT OF NECK POSITION: 900)mm
BODY COVER: DARK BROWN [DB]
PITCH BETWEEN CHAIR AND CHAIR: 1300mm
^{*}Other pitch lengths also available



BODY COVER
DARK BROWN [DB] PEARL WHITE [PW]
OPTIONS
BB BRACKET (required for use with electric barber's chair) EA-RSSBP
NECK CUSHION^{*} EA-RSSN2
^{*}Included with main unit

Chairs recommended for use in combination KAZE / OTO →P.15



A wash unit with fold-away basin and storage function. Simple yet user-friendly wall mount basins. Unique products that matches effective salon space usage with design.

SIDEWASH BASINS & CABINETRY SYSTEMS

- EXCELA
- CLASSIC MAJOLICA CABINET
- CLASSIC MIRROR
- OPCEED
- SALON CONSOLE
- STANDARD MIRROR
- MAJOLICA SERIES
- NSS SERIES

For more information
<http://www.takarabeiron.co.jp/global/enquiry/thompson/>



EXCELA

An encounter with evolved quality — Long-preferred salons provide the high-quality relaxation that enables one to forget the passage of time. Solid trust and comfort: You are sure to find these with EXCELA.



S-EXDW-3S2
 KF-EXM800×2
 KF-EXSPG580×3

CABINET: DARK WOOD [DW]
 MIRROR SIDE PANEL: GREY [G]



S-EXNW-3S2
 KF-EXM800×2
 KF-EXSPB580×3

CABINET: NATURAL WOOD [NW]
 MIRROR SIDE PANEL: BEIGE [B]



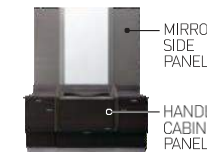
S-EXWH-3S2
 KF-EXM800×2
 KF-EXSPB580×3

CABINET: WHITE [WH]
 MIRROR SIDE PANEL: BEIGE [B]

EXCELA S SIZE DOUBLE SET-UP MIRRORS AND SIDE PANELS
 W2800×D360-753×H922 (INCLUDING MIRROR: 2087) (HEIGHT OF NECK POSITION: 760)mm
 CABINET: DARK WOOD [DW] MIRROR SIDE PANEL: GREY [G]

COLOUR VARIATIONS

- (handle and cabinet panel) (mirror side panel)
- DARK WOOD [DW]
 - GREY [G]
 - NATURAL WOOD [NW]
 - BEIGE [B]
 - WHITE [WH]



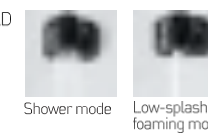
OPTION



NECK CUSHION
 KF-NC
 *Sold separately
 (Not included with basin unit)

UPGRADE OPTION

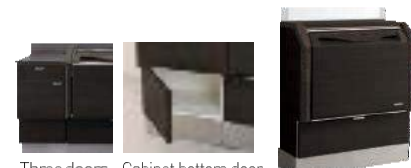
ADJUSTABLE SHOWER HEAD
 The product can be switched between shower and low-splash foaming mode, depending on the desired treatment.



VARIATIONS

SIZE	MODEL NO.
S	S-EX□□-3S
L	S-EX□□-3L
LL	S-EX□□-3LL

*□□ will be replaced with cabinet colour [DW: Dark wood, NW: Natural wood, WH: White].
 *Selectable from single tap mixer and double tap thermostatic control. Prices may vary.



Three doors Cabinet bottom door

The lower unit is also available as a separate island unit. The side panels are finished in panelling, which means the unit can be used by itself without using side cabinets.

P1-EX□□/KF-EX780

MIRRORS AND SIDE PANELS

NAME		CODE
GREY	MIRROR	KF-EXM800
	SIDE PANEL 580	KF-EXSPG580
BEIGE	SIDE PANEL 830	KF-EXSPG830
	SIDE PANEL 580	KF-EXSPB580
	SIDE PANEL 830	KF-EXSPB830

*580 is for the S size, and 830 is for the former L size, L size, and LL size

CLASSIC MAJOLICA CABINET

This handsome cabinet with recessed panel doors and oak grain finish blends easily with a wide variety of interiors.



CLASSIC CABINET S SIZE SINGLE SET-UP
 S-CLC-S-1

BASIN: MAJOLICA PORTO AND FITTINGS
 EX-SB 2W/EA-SB P2

The compatible basins are the MAJOLICA 307 and the MAJOLICA PORTO.

W1800×D807 (INCLUDING BASIN) ×H920mm

CLASSIC MIRROR
 KF-CLCM

W800×D32×H1000mm



CLASSIC CABINET S SIZE SINGLE SET-UP
 S-CLC-S-1

W1800×D331×H920mm



CLASSIC CABINET LL SIZE SINGLE SET-UP
 S-CLC-LL-1

W2000×D331×H920mm

VARIATIONS

SIZE	SET CODE
S	S-CLC-S
LL	S-CLC-LL

*Basin is sold separately. *
 *Separate island specifications may be customisable order. *
 *The width can be customised. Available widths are 665mm to 880mm. *
 *Cabinets can be attached on the left or right side.



Cabinet door When opened



Used towel container

Compatible basins



MAJOLICA PORTO
 EX-SB 2W
 EA-SB P2



MAJOLICA
 EX-307 04
 EA-PV6SX

CLASSIC MIRROR

A mirror framed in natural wood provides a three-dimensional feel. When used in combination with the CLASSIC MAJOLICA CABINET, a modern classic space with a sense of coordination is created.

KF-CLCM
 W800×D32×H1000mm



OPCEED

OPCEED is an advanced fixed-basin unit. A sharp, user-friendly set-up, it provides both utility and beauty while enhancing interior decorating. The standard is constantly evolving as we shape the future of the salon.



COLOUR VARIATIONS



OPTIONS

GLASS TOP (one sheet)
S SIZE KF-OCGLS□ L SIZE KF-OCGLL□ LL SIZE KF-OCGLLL□
(Selectable from single tap mixer and double tap thermostatic control. Prices may vary.)



EXCLUSIVE BOTTLE*

BOTTLE TRAY
□ will be replaced with G: GREY SMOKE or A: AQUA GREEN.
EXCESS WATER DRAINING TRAY* KF-OCMT
*Included with main unit

BACK GUARD

KF-OCBG□
□ will be replaced with
B: BRONZE or M: MILKY WHITE.)

VARIATIONS

SIZE	SET CODE
S	S-OCWID(IN)W-3S
L	S-OCWID(IN)W-3L
LL	S-OCWID(IN)W-3LL

*A lower unit is also available as a separate island specifications. The side surfaces are finished in paneling so that the item can be used by itself without the side cabinets.
*Single tap thermostatic control also available. Prices may vary.

OPCEED S SIZE DOUBLE SET-UP S-OCWD-3S2
GLASS TOPS AND MIRRORS KF-OCGLSB×3 KF-SLM800×2

W3000×D657×H800 (HEIGHT OF NECK POSITION: 760)mm

BASIN: WHITE
CABINET: DARK WOOD, 3 DOOR TYPE
GLASS TOP BOARD: BRONZE
MIRROR: STANDARD MIRROR (STAINLESS)
*Basin is made by cultured marble



SALON CONSOLE

The unique fold-away basin system has been created to allow for the optimum use of space as well as the practicality of a basin which is perfect for VIP rooms, small luxury barber's shops, spas, and make-up rooms. Clean, neat, compact, and ready for shampooing as and when required.



CUSTOM TYPE

S SIZE DOUBLE SET-UP S-CUD-S2
MIRRORS KF-SLM800×2

W2800×D315-756×H895
(HEIGHT OF NECK POSITION: 770)mm
PANEL: ROSE WOOD
COUNTER: SHELL WHITE
MIRROR: KF-SLM800

OPTION STAINLESS VERSION



COLOUR VARIATIONS

(panel) (counter)
DARK GREY MAT WHITE SHELL WHITE (metamrine facing plate)
ROSE WOOD

VARIATIONS

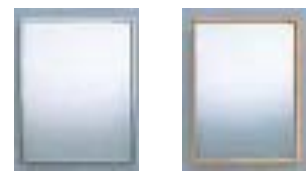
SIZE	SET CODE
S	S-CUG(W)ID-S
L	S-CUG(W)ID-L
LL	S-CUG(W)ID-LL



*Selectable at purchase. Prices may vary.

STANDARD MIRROR

Three widths: 650, 800, 1060mm
(all are the same height at 1060mm)



STAINLESS (KF-SLM650/800/1060)

LIGHT WOOD (KF-LM800)
800mm width only



DARK WOOD (KF-DM650/800/1060)

ROSE WOOD (KF-RM650/800/1060)

MAJOLICA SERIES

A wall mount sidewash basin with a simple design. Showcasing made-in-Japan quality and well-planned dimensions, it remains an extremely popular choice.

MAJOLICA PORTO

A sidewash basin with a new level of comfort. The solid and soft gel cushion supports the customer's neck comfortably. A thinner basin makes inner dimensions of the basin larger and deeper which enables more effective shampoo work.

DOUBLE TAP WITH FITTINGS AND THERMOSTATIC CONTROL

BASIN EX-SB 2W
FAUCET FITTINGS EA-SB P(S)2
BASIN COLOUR: WHITE [W]

OUTER DIMENSIONS: W640 (±7) × D535 (±10)mm

COLOUR VARIATIONS



SINGLE TAP WITH FITTINGS AND THERMOSTATIC CONTROL

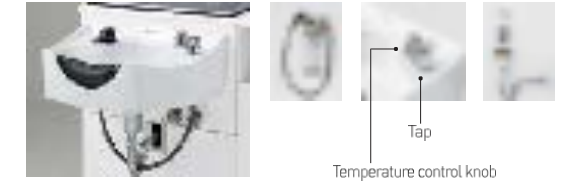
BASIN EX-SB 1W
FAUCET FITTINGS EA-SB P(S)1
BASIN COLOUR: WHITE [W]

OPTIONS

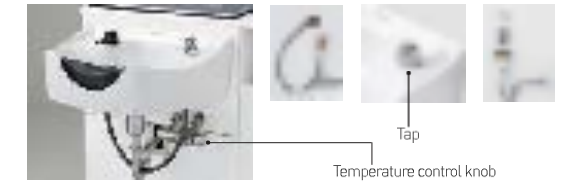
NECK CUSHION* EA-NBN
*Included with faucet fittings

BASIN & FAUCET FITTINGS (with thermostatic control)

DOUBLE TAP WITH FITTINGS AND THERMOSTATIC CONTROL



SINGLE TAP WITH FITTINGS AND THERMOSTATIC CONTROL



*Please always use the MAJOLICA PORTO basin and faucet fittings as a set.
*Faucet fittings include tap, temperature control knob, thermostat, trap housing, neck cushion, neck base, fitting, shower head & hose and shower head holder.
*Two drain pipes are available: S-and P-trap model

MAJOLICA

WHITE EX-307DR04

WHITE EX-307 04 (DOUBLE TAP TYPE)

OUTER DIMENSIONS: W600 (±25) × D515 (±25)mm
INNER DIMENSIONS: W495 × D325mm

WIDE MAJOLICA

WHITE EX-333D W

BLACK EX-333D 06

OUTER DIMENSIONS: W600 (±25) × D555 (±25)mm
INNER DIMENSIONS: W525 × D360mm

BASIN & FAUCET FITTINGS

		SINGLE TAP WITH FITTINGS AND THERMOSTATIC CONTROL	
		EA-PV160	EA-PSIV6SX
MAJOLICA 307D	EX-307DR04 (WHITE)	○	
WIDE MAJOLICA 333D	EX-333D W (WHITE)	○	
	EX-333D 06 (BLACK)	○	
MAJOLICA 307	EX-307 04 (WHITE)		○

NSS SERIES

Takara Belmont brings you a new standard of sidewash unit that is highly satisfactory to both stylists and customers.

NSS MINON

EX-NBNKMPHB
W550×D715×H965mm
(WALL MOUNT TYPE / HEIGHT OF NECK POSITION: 775mm)
BODY COLOUR: BLACK [B]

VARIATIONS

WALL MOUNT TYPE
SELF-STANDING TYPE
HEIGHT OF NECK POSITION: 750mm [L], 775mm [M], 800mm [H]
*Piping selectable from wall piping, underfloor piping and above-floor piping

OPTIONS

NECK CUSHION* EA-NBN
COVERING FOR ABOVE-FLOOR PIPING CB-NBPku
*Included with main unit

NSS MIRAKU

SC-S81XMSH24
W700×D1295×H890mm
(LONG LEG REST TYPE WITH M ADJUSTER)
SEAT: DARK BROWN [SH24]

VARIATIONS



SEAT

BLACK [NL5]
IVORY [SH15]
DARK BROWN [SH24]



The combination of technology and quality is advancing approaches to hair so that salon services are more effective and comfortable.

PROCESSORS

- ROLLER BALL F
- SPA MIST II
- MICRO MIST

For information
<http://www.takarabeauty.com/global/beauty/processors/>



ROLLER BALL F FAR-INFRARED HAIR PROCESSOR

An advanced design that fuses beauty with function. Slim and lightweight* to facilitate mobility and ease-of-use. Carbon heater increases service efficiency and comfort.

*Approximately 30% lighter than the previous model (body and stand)

Newly equipped carbon heater

Takara Belmont's carbon element reaches the selected output setting around two minutes faster than the ceramic elements of conventional models. Significantly higher energy wavelengths act on the hair and chemicals to thoroughly process the colour¹ and the chemical reaction of perms.²

¹Colour: acidic hair dyes. ²Perms: hot double-process perms.

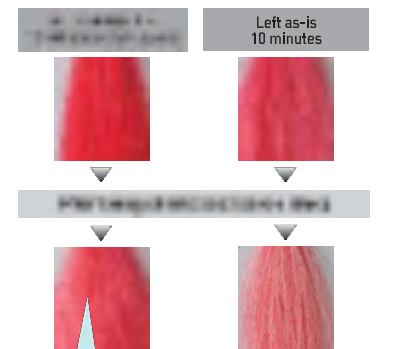


WALL MOUNT TYPE
 W485×D785×H673mm

STAND TYPE
 W485×D785×H673mm
 W1014×H1513 (STROKE 200)mm



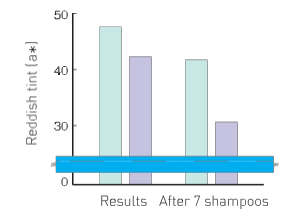
Degree of Penetration into Hair and Persistence (comparison using an acidic dye)



With ROLLER BALL F, the dye was absorbed and took hold evenly. Even after seven shampoos there was relatively little loss of colour.

Degree of Penetration into Hair and Persistence (comparison using an acidic dye)

ROLLER BALL F: 10 minutes of exposure
 Left as-is: 10 minutes

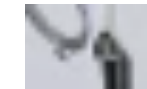


(Processing Details)
 ROLLER BALL F were compared in a test in which an acidic hair dye was applied to grey human hair. Immediately after processing, there was little variation in the strength of the reddish tint. However, when we compared the results after seven shampoos the locks of hair that had been exposed to ROLLER BALL F for ten minutes clearly held the reddish tint better, demonstrating a longer-lasting persistence of colour.

OPTION

COOLING FAN FOR COOLING DOWN THE NAPE AREA

*The cooling fan is a factory-installed option. Specify when ordering. Prices may vary.



STAND TYPE
 AK-S235F□□



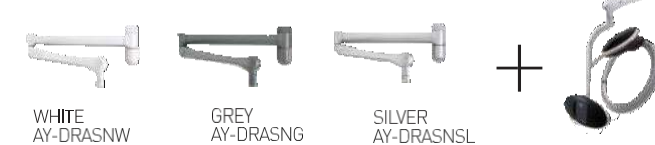
WALL MOUNT TYPE
 AK-S23AF□□

□□ will be replaced with colour code

VARIATIONS

TYPE	STANDARD MODEL	CREATIVE MODEL	90TH MODEL	SMOKY COLOUR MODEL
STAND	 AK-S23S-B BLACK AK-S23S-W WHITE AK-S23S-SL SILVER AK-S23S-R RED AK-S23S-E EBONY AK-S23S-M MAHOGANY	 AK-S23S-SL SILVER AK-S23S-R RED AK-S23S-E EBONY AK-S23S-M MAHOGANY	 AK-S23S-E EBONY AK-S23S-M MAHOGANY	 AK-S23S-PG PLANTS GREEN AK-S23S-SB MISTY BLUE AK-S23S-LB LATTE BROWN
WALL MOUNT	 AK-S23A-B BLACK AK-S23A-W WHITE AK-S23A-SL SILVER AK-S23A-R RED AK-S23A-E EBONY AK-S23A-M MAHOGANY	 AK-S23A-SL SILVER AK-S23A-R RED AK-S23A-E EBONY AK-S23A-M MAHOGANY	 AK-S23A-E EBONY AK-S23A-M MAHOGANY	 AK-S23A-PG PLANTS GREEN AK-S23A-SB MISTY BLUE AK-S23A-LB LATTE BROWN

WALL MOUNT ARM



SPA MIST II

MIST TREATMENT PROCESSOR

Control the temperature and quantity of microscopic mist—Helping provide the best shampoo treatment experience



STAND TYPE
AK-160SBR/AY-160S
W295×D375×H750-1200
(WITH HOSE UPRIGHT)mm
COLOUR: BROWN



TROLLEY TYPE
AK-160SW/EA-160WB
W550×D330×H700 (TROLLEY)mm
COLOUR: WHITE
TROLLEY: BLACK



COLOUR VARIATIONS



Mode selection keys

Simply press a key to select the mode you want, and the SPA MIST II gives just the right temperature and amount of mist required for each treatment.



Open Mist Ball Nozzle

Just attach it to the shampoo basin for easy Open Mist treatment.



Aromatherapy Diffuser Holder

Attach to the Open Mist Ball Nozzle to combine mist with a soothing aroma that enhances the customer's relaxation.



Open Mist

Warmth creates comfort.



Scalp Care

Opens the pores to clean scalp



Hair Care

Penetrates deep into hair for longer-lasting effect



Colour

Even colouring, minimal fading



Perm

Beautiful ridges in a short time



Hand Care

Moist, soft hands
Heated mist enhances the cleansing and moisturising of hands, and brings added value to and care services.

ACCESSORIES (included with main unit: Different in some countries)

NAME	PHOTO	DESCRIPTION	CODE	NAME	PHOTO	DESCRIPTION	CODE
DEIONISER		<ul style="list-style-type: none"> Housing Cartridge Hardness tester 	EX-TJ5	END CAP/ COUPLING		2 sets	—
FLEXIBLE HOSE		1 unit (350 to 680mm)	—	*When the deioniser cartridge reaches its capacity and becomes exhausted, pure water will not be produced, which could cause equipment to malfunction. Check the water using the hardness tester, and replace the cartridge at regular intervals. • Cartridge only: Code BM03416 • Hardness tester only: Code BM03419			—

OPTIONS (sold separately)

NAME	PHOTO	DESCRIPTION	CODE	NAME	PHOTO	DESCRIPTION	CODE
OPEN MIST BALL NOZZLE		<ul style="list-style-type: none"> Nozzle with adhesive disk Extra adhesive disk Coupling tube×2 	EA-160BN	TURBAN		3 pieces *Improves adhesion at face line when using caps.	EA-200N1T
AROMATHERAPY DIFFUSER HOLDER		<ul style="list-style-type: none"> Holder for diffuser pad Aromatherapy diffuser pad×5 *Aromatherapy oil is not supplied. *Must be used with Open Mist Ball Nozzle. 	EA-160AH	TREATMENT CAP (WHITE)		<ul style="list-style-type: none"> For use with Yume and Open Mist Ball Nozzle×2 For use with Rear Shampoo or Yume×2 For use with styling chair×2 For use with Calme or barber's chair×2 	EA-CMC-YB EA-SMC-RSW EA-SMC-SW EA-SMC-CA
FLEXIBLE HOSE HOLDER		1 unit (400 mm) • Holds the flexible hose. Used for Head Spa, treatments, coloring, and perming in a styling chair or barber's chair.	EA-160HH	PERMING CAP, COLOURING CAP (SILVER)		<ul style="list-style-type: none"> Large (for perming)×1, Small (for colouring)×1 *Small is same size as Treatment Cap. Large (for perming)×2 Small (for colouring)×2 *Small is same size as Treatment Cap. 	EA-SMC-PC EA-SMC-PCB EA-SMC-PCS
HAND CARE CAP, CAPO		1 piece Transparent plastic cap for hand care	EA-160HCCP				

MICRO MIST

HAIR TREATMENT PROCESSOR

A great quantity of microscopic mist swells a hair, permeates deep in to a hair and enhances treatment effect. Micro Mist—A strong supporter of hair treatment available only at hair salons.



Perfect for multiple-application treatment

AK-200N1W/AY-200N1
W(HEAD 385/ LEGS 696)×
D775×H1550 (STROKE 150)mm
COLOUR: WHITE



OPTIONS

DEIONISER (Housing, cartridge, hardness tester) ¹	EX-TJ5
CARTRIDGE ONLY	BM03416
HARDNESS TESTER ONLY	BM03419
TURBAN (3 PCS.) ¹	EA-200N1T
FACE GUARD (3 PCS.) ¹	—
FACE GUARD (2 PCS.) ²	EA-200N1FG2
NECK SUPPORT CUSHION (1 PCE.)	CADP27A0

¹Included with main unit. Different in some countries
²When placing an additional order

COLOUR VARIATIONS

WHITE CHARCOAL GREY

*5cm longer stand is available as an option.

Performance of Mist Processors (SPA MIST II and MICRO MIST)

POINT 1

Uniform heating for a consistent finish

Mist fills cap/hood, infusing hair with moisture and uniform warmth, so treatment naturally permeates every strand.

POINT 2

Cooling sustains the treatment

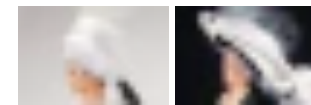
The cooling function locks the treatment particles into the hair. The mist heating and cooling functions combine to give longer-lasting results.

POINT 3

Relaxation

Warm mist provides gentle heating for comfort, for a soothing, luxurious experience.

HAIR CARE (common to SPA MIST II & MICRO MIST)



Penetrates deep into hair for longer-lasting effect

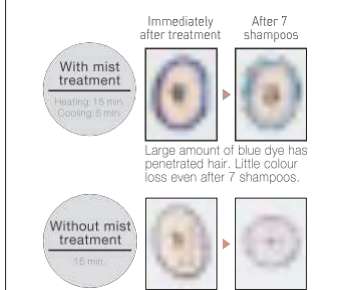
- Opens cuticle layers so treatment particles can go deep into hair.
- Cooling closes cuticles to keep hair healthy.

Level of penetration and durability Data 1, 2, and 3 are based on tests where dyeing capacity and level of penetration are assessed using acid dye on bundles of grey human hair.

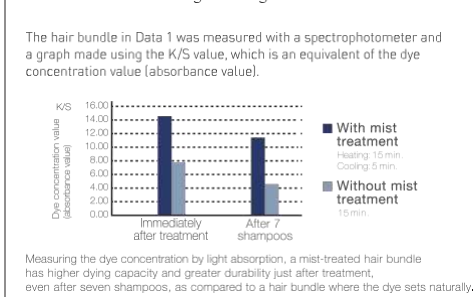
Data 1: Surface comparison (after applying dye)



Data 2: Cross section comparison (after applying dye)



Data 3: Comparison of dyeing capacity and lasting strength



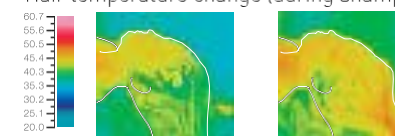
OPEN MIST (SPA MIST II)



Warmth creates comfort

- More easily allows hairstylist to give customer a comfortable shampoo and scalp treatment.
- Mist and warmth combine to relax customer.

Hair temperature change (during shampoo)



Without Open Mist

- Hair gradually cools, resulting in not only less lather but also cold lather.
- Customer feels cold.

With Open Mist

- More shampoo lather is generated and hairstylist's hands slide easily through hair.
- Customer gets a warm, comfortable feeling from face line to behind the ear.

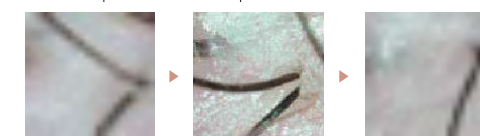
SCALP CARE (SPA MIST II)



Opens pores to clean scalp

- Moisturising and heating opens pores, freeing scalp of keratotic plugs and debris.
- With minimal stress on scalp, keratotic plugs and debris are removed for a beautiful clean.

State of pores and scalp



Before treatment

Hardened sebum clogs pores.

Mist heating

Moisture spreads throughout scalp, opening pores and liquefying sebum.

After shampoo

Debris is removed and pores are open and clean.

*Similar results were achieved with treatment agents.



A product line-up with safety and reassurance at its foundation for the safe performance of salon services.
Takara quality has been applied to beauty salon & spa fields such as esthetic, eyelash extensions and nail services.

BEAUTY SALON & SPA EQUIPMENT

- FACIAL TREATMENT PROCESSORS
- ESTHETIC BEDS & CHAIRS
- EYELASH CHAIR RICHE
- NAIL CHAIR REINE II
- NAIL TABLE CHERIE
- NAIL COUNTER & WAGON FINA
- FOOT REST & PEDISTOOL

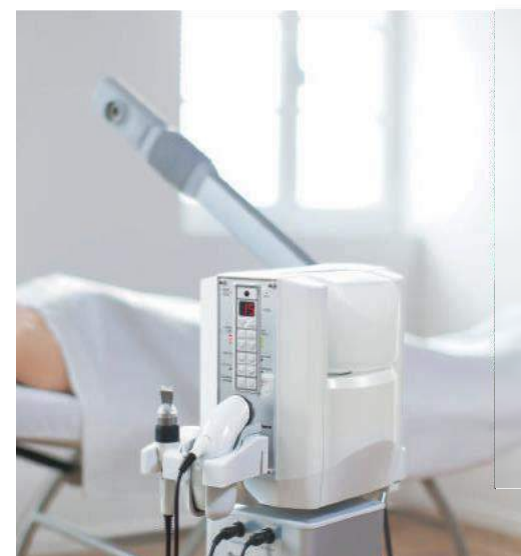
More information
<http://www.takara-lab.com/global/lineup/facial.html>



FACIAL TREATMENT PROCESSORS

NOAGE

Select functions to suit your needs, from simple functions tailored to aging care such as steamer and ultrasonic care to the full specifications. NOAGE enables salons to select functions to suit their treatment services, from basic skincare to full esthetic treatments.



NOAGE S
STEAMER + SONIX
AE-FCS
For a list of functions, please refer to VARIATIONS ①.



NOAGE SLF
STEAMER + SONIX +
SUCTION / PATTERN + FRIMATOR
AE-FCSLF
For a list of functions, please refer to VARIATIONS ②.



NOAGE SLFIP
STEAMER + SONIX +
SUCTION / PATTERN +
FRIMATOR + IONOS + PELTIER
AE-FCSLFIP
For a list of functions, please refer to VARIATIONS ③.

W460×D460×H1506mm (with steamer arm upright)

VARIATIONS

	CODE		S	L	F	I	P
			SONIX (ACTIVATOR / EXFOLIATOR)	SUCTION / PATTERN	FRIMATOR	IONOS	
NOAGE STEAMER	AE-FS	●					
NOAGE SL TYPE	NOAGE S ①	AE-FCS	●				
	NOAGE SLF ②	AE-FCSLF	●	●	●		
	NOAGE SLI	AE-FCSLI	●	●		●	
	NOAGE SLFI	AE-FCSLFI	●	●	●	●	
	NOAGE SLFIP ③	AE-FCSLFIP	●	●	●	●	●
NOAGE L TYPE	AE-FCL	●		●			



NOAGE STEAMER
AE-FS

SONIX

Portable ultrasonic combination for deep cleansing and aging care

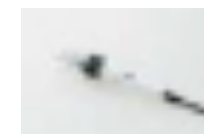


AE-FBS
W185×D184×H89mm
EQUIPPED FUNCTIONS
EXFOLIATOR / ACTIVATOR

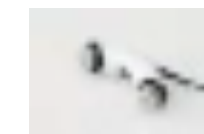
STEAMER AND OTHER FUNCTIONS



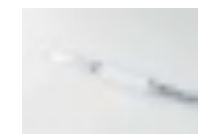
STEAMER
Provides a diversity of steams



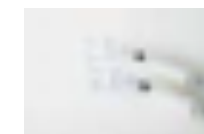
EXFOLIATOR
Deep cleansing through ultrasonic vibrations removes debris as deeply as the micro level.



ACTIVATOR
The combination of two types of ultrasonic vibrations provides total care, from the skin's surface layer to problems deep within the skin.



SUCTION (Vacuum)
Sucks debris from pores, creating clear skin



PATTERN
Adding delicate vibrations to tone-up the skin



FRIMATOR (Brushes)
The detergency and comfort that only a brush can provide



IONOS (Galvanic)
The power of electric current increases penetration ability for one-rank-higher effects



PELTIER
Maintain healthy skin with hot - cool treatment

Electric

ESTHE PLACE

Create a high-quality and relaxing atmosphere with graceful movements.



SC-AB1A SH8
W730×D1150-2000×H550-770mm
(when the bed is flat)
STROKE: 220mm



Lift-up height-adjustable headrest **Height-adjustable armrest** **Shockless movement**



Footrest
*Foot bath is not included.

Foot switch
*2 preset (facial care and body care position settings), auto-return, backrest/seat/leg rest adjusting switches are equipped.

Raising/lowering	Electrically operated (vertical pump)
Backrest/leg rest	Electrically operated

EVRI-1 N

A high-quality bed suitable for all types of esthetic treatments



SU-C030 NC1 (UPPER PART)
SP-C03EN (BASE)
W710×D1800×H575-785mm
(when the bed is flat)
STROKE: 210mm

Raising/lowering	Electrically operated (vertical pump)
Backrest	Electrically operated



Foldable headrest **Electric vertical pump** **Adjustable backrest**

SARA SC-770

Electrically-operated bed compatible with all types of body treatment



SU-770 NC1 (UPPER PART)
SP-770N (BASE)
W710×D1830×H555-770mm
STROKE: 215mm

Raising/lowering	Electrically operated (vertical pump)
------------------	---------------------------------------



Electric vertical pump **Breathing hole**

SC-770DX

New value has been added to the SARA SC-770.

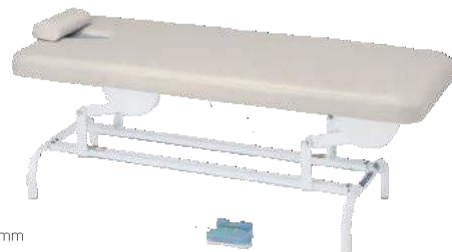


SU-770DX NC1 (UPPER PART)
SP-770DXN (BASE)
W710×D1930×H600-815mm
(when the bed is flat)
STROKE: 215mm

Raising/lowering	Electrically operated (vertical pump)
Backrest	Manual (operates with a stopper)

ESTHE BODY BED

The reliable raising and lowering system is quiet and powerful.



SC-B11ECG2
W700×D1900×H530-830mm
STROKE: 300mm

COLOUR VARIATIONS (3 colours)

- GREEN [CG15]
- BLUE [CG51]
- BEIGE [CG2]

Raising/lowering	Electrically operated
------------------	-----------------------

Manual

KAITEKI BIGAN

A chair designed especially for facial treatments—gently supports the customer and provides comfortable reclining.



SC-753NL2
W745×D710-1610×H725-1150mm
SEAT HEIGHT: 565mm



Synchronised movement



User-friendly foot bar

ALL-ROUND NDX

Functionality and comfort have been further enhanced.



SC-21CDXNC1
W815×D1425-1825×H640-1285mm
SEAT HEIGHT: 640mm



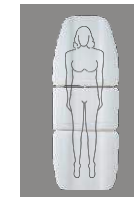
Foldable headrest

SURGE

A superior holding feeling suitable for all reclining positions



SC-A41M
W700×D1390-1830×H640-1215mm
SEAT HEIGHT: 640mm



Raised edges
Comfortable design for face up/down lying posture

SC-752DXN

A streamlined chair with simple soft-flowing lines



SC-752DNNC1
W620×D1180-1780×H620-1225mm
SEAT HEIGHT: 620mm

ECOTTO

Premium reclining comfort with stylish design with buttons



SC-850MT3
W655×D1315-1795×H640-1190mm
SEAT HEIGHT: 610mm

CAVARIER II

A smart chair that can perform multiple roles



SU-A66M CN1/SP-YC
W590×D650-1050×H920-1125mm
FLOOR STEP W300×D255×H170mm
*With floor footrest

MANON

For high-quality treatment even in limited space



Comfortable seat and optional armrests **Reclining backrest**



Height adjustable headrest **Portable Design**

SC-E51MT1 [BLACK]
SC-E51MT2 [BEIGE]
W475×D590-1000×H610-995mm (without armrests)
W590×D590-1000×H610-995mm (with armrests)
W475×D300×H1020mm (w/o armrests, when folded)

OPTION
ARMRESTS
SC-E51-ARMT1 [BLACK] SC-E51-ARMT2 [BEIGE]

EYELASH CHAIR RICHE

Eyelash extensions enter the age of comfort. Riche was developed especially for eyelash extension services and brings advances comfort, and usability for both customers and eyelash extension practitioners.

RICHE

SC-EL141ES9
W695×D850×H1265mm
SEAT: IVORY [ES9]



WHITE [ES1]

BROWN [ES12]



Chair, trolley, and stool are all easily within line of sight for stable operation.



Webbing technology brings hammock-like comfort.



Contoured pillow gently supports the head and neck.



Chair's upright position saves space and allows various procedures and services.



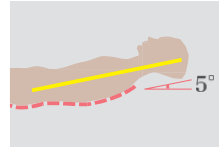
Leg rest moves independently to allow foot care at the same time.



Arm supports with two positions reduce physical burden.



Viewing angle minimises fatigue 35°
*Actual angle varies for each person.



Reclines to a comfortable position 5°



Facial care also available while performing nail care service.

OPTION

LUMBAR CUSHION
EA-D83C□□□□
*□□□□ will be replaced with upholstery colour.



RICHE STOOL

SC-ELSES9
W536×D536×H735mm
INITIAL HEIGHT: 450mm
STROKE: 195mm
SEAT: IVORY [ES9]



A large seat with low-resistance cushion and lumbar support enables practitioners to work for long periods.

SEAT

WHITE [ES1] IVORY [ES9] BROWN [ES12]

RICHE WAGON

SR-WA141
W647×D543×H692-935mm
ASSIST TRAY INNER
DIMENSIONS: W200×D140mm



Trolley with elevating and spinning tray offers greater efficiency.

RICHE NAIL TABLE

Nail table allows the practitioner to provide nail services at the same time.



EA-EL141T

TABLE TOP: W230×D330mm
*A set includes both left and right tables.
COLOUR: BROWN



Tables are installed above both armrests of the RICHE. This makes it possible to perform nail services even when the chair is in a reclining position.

*The tables are attached to the RICHE body and cannot be easily removed.

NAIL CHAIR REINE II

CIL

A reclining nail chair that supports a variety of services including hand care, foot care and facial treatments



SC-NA121WHT/
EA-NA121F/
EA-NA121T
W740×D840×H1170mm
(chair only)
W740×D1220×H760mm
(when reclined, chair only)
SEAT: WHITE [WHT]



SEAT

WHITE [WHT] BROWN [BR]

OPTION

EXCLUSIVE TABLE
EA-NA121T
W540×D323×H255mm



UNA

A nail chair developed specifically for hand and foot care services while pursuing seating comfort



SC-NA122WHT/
EA-NA121F/
EA-NA121T
W690×D810×H1260mm
(chair only)
SEAT: WHITE [WHT]



CAMMY

A compact nail chair with a low backrest optimum also for hair and other services



SC-NA123BR/
EA-NA121F/
EA-NA121T
W690×D645×H890mm
(chair only)
SEAT: BROWN [BR]

FOOT WAGON

EA-NA121F

W750×D460×H190mm

*Cushion included with chair part



NAIL TABLE CHERIE

CHERIE



UF-NATCWW/UF-NATCFW

W900×D450×H760mm

TABLE TOP: WHITE
FRAME: WHITE

★Service outlet available only in 100V



UF-NATCNB/
UF-NATCFB
TABLE TOP: NATURAL BROWN
FRAME: BLACK



UF-NATCNW/
UF-NATCFW
TABLE TOP: NATURAL BROWN
FRAME: WHITE



UF-NATCWB/
UF-NATCFB
TABLE TOP: WHITE
FRAME: BLACK

COLOUR VARIATIONS

(table top)

WHITE

NATURAL BROWN

(frame colour)

WHITE

BLACK

NAIL COUNTER & WAGON FINA

FINA

COUNTER & WAGON

SR-NA121CWB

W522×D312×H758mm

COUNTER ONLY

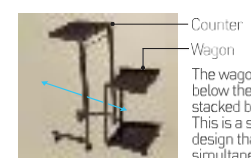
SR-NA121CB

W522×D312×H758mm

TOP TABLE: MELAMINE FACING PLATE

FRAME: STEEL (POWDER COATING)

CASTER: URETHANE



Counter

Wagon

The wagon can be stored below the counter and stacked by magnets. This is a simple, space-saving design that allows for simultaneous conveyance.

BROWN [B]



FOOT REST & PEDI STOOL

FOOT REST SP



SC-NAFRA

W505×D304×H450mm

PEDI STOOL SP



SC-NAPSA

W340×D340×H200mm



Since these items are used frequently every day, Takara Belmont provides high-quality products with innovative details. Exceptional products that provide hidden support for professional services.

ACCESSORIES

- TOWEL WARMERS / COOLERS
- STERILISERS
- WAITING CHAIRS
- STOOLS
- SERVICE TABLES & TRAYS
- TROLLEYS
- MIRRORS

More information
<http://www.takarabelmont.co.jp/global/accessories/>



TOWEL WARMERS / COOLERS

HC-11UV PRO
 TOWEL WARMER
 WITH STERILISING UV LAMP
 DIMENSIONS: OUTER: W450×D363×H322mm
 INNER: W348×D207×H152mm
 CAPACITY: 11 LITRES COLOUR: WHITE



HC-6
 TOWEL WARMER
 DIMENSIONS: OUTER: W300×D307×H230mm
 INNER: W220×D220×H135mm
 CAPACITY: 6 LITRES
 COLOUR: WHITE



HC-6(K)
 COLOUR: BLACK



HC-6(SUS)
 COLOUR: STAINLESS SILVER

HC-11LX PRO
 CONVERTIBLE 1 DOOR TYPE
 TOWEL WARMER / COOLER
 DIMENSIONS: OUTER: W450×D363×H322mm
 INNER: W348×D207×H152mm
 CAPACITY: 11 LITRES COLOUR: WHITE



HC-21LX PRO
 CONVERTIBLE 2 DOOR TYPE
 TOWEL WARMER / COOLER
 DIMENSIONS: OUTER: W450×D363×H562mm
 INNER: W348×D207×H152mm×2 DOORS
 CAPACITY: 11 LITRES×2 DOORS
 COLOUR: WHITE



CC-8
 TOWEL COOLER
 DIMENSIONS: OUTER: W300×D340×H261mm
 INNER: W227×D182×H152mm
 CAPACITY: 6 LITRES

Stylish model that can be switched between hot and cool according to the season or changes in the services offered at the salon. The high-capacity model allows both the upper and lower units to be switched between hot and cool according to use. Offers both space savings and flexibility.



STERILISERS

STERILISER UV-100
 EX-UV100
 W416×D250×H410mm



STERILISER UV21
 EX-UV21AW
 W440×D240×H285mm
 DOOR MATERIAL: ACRYLIC
 ★Available in 100V only



WAITING CHAIRS

THEIA SERIES

CARRE-W
 SC-W3APMN2
 W565×D585×H745mm
 COLOUR: DARK BROWN [MN2]



CIRK-W
 SC-W3BBVT2
 W560×D595×H790mm
 COLOUR: DARK BROWN [VT2]



SEAT

- | | |
|----------------------|---------------------|
| (Sweet line) | (Bitter line) |
| ■ PURPLE BROWN [MN1] | ■ DARK BROWN [VT2] |
| ■ DARK BROWN [MN2] | ■ CAMEL [VT4] |
| ■ IVORY [MN3] | ■ BROWN [NF1] |
| | ■ OLIVE BEIGE [NF2] |

*MN leather is processed to create a fabric-like texture and it feels different from ordinary leather.

STOOLS

R.A.F STUOL



SC-RFS
 W490×D490×H453-645mm
 *Natural wood is used for the seat

D.SUITE STUOL



SC-DSS-ES*
 W610×D610×H475-675mm
 COLOUR: WHITE [ES1]

SEAT
 ■ WHITE [ES1]
 ■ BLACK [ES8]

VINTAGE ALT STUOL



SC-VASNVT1
 W450×D450×H475-681mm

D-STUOL CLEAR



SU-241N/SP-241C
 W620×D620×H460-660mm

D-STUOL ALUMINIUM



SC-246C
 W620×D620×H460-660mm

THEIA STUOL



SC-THSSMN3
 W487×D487×H465-657mm
 LEG FRAME: SILVER [S]
 SEAT: IVORY [MN3]

SEAT
 ■ IVORY [MN3]
 ■ CAMEL [VT4]
 *Black leg frame is used for camel [VT4]

ESTHE STUOL K



SC-K747 NC1
 W590×D590×H445-645mm
 STROKE: 200mm
 SEAT DIAMETER: 330mm

SHARAKU K



SC-K22 NC1
 W590×D590×H470-670mm
 STROKE: 200mm
 SEAT DIAMETER: 365mm (widest part)

DUO STUOL



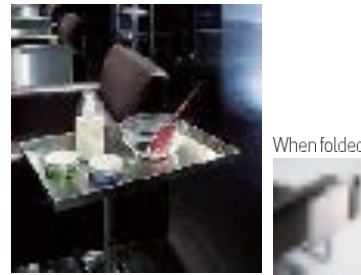
SC-DS1 CN1
 W552×D528×H350-462mm
 STROKE: 112mm

YUME STUOL / ESPOIR STUOL / M-STUOL → P.2E RICHE STUOL → P.41

SERVICE TABLES & TRAYS

ASISTA II

This tray is ideal for use in place of a trolley to save space and boost work efficiency.



SR-AS2MN

W365xD250xH797*mm
*Height from the floor to the top of the tray (dimensions when combined with the SP-YE).
When attached, the chair seat is approximately 5 cm higher.

VARIATIONS

ARM LENGTH	HOLDER FOR HAND DRYER	
	WITHOUT	WITH
SHORT (S)	SR-AS2SN	SR-AS2SD
MEDIUM (M)	SR-AS2MN	SR-AS2MD
LONG (L)	SR-AS2LN	SR-AS2LD

*The arm length is selected according to the model of the chair top. *Combination with some of the electric chair bases, such as SP-PBN, is not available.
*ASISTA II and TORETTA can be installed on Takara Belmont styling chairs only.

TORETTA

A service table that attaches to a chair and does not get in the way when providing services



SR-WA5AA

W225xD225xH690*mm
*Height from the floor to the top of the table (dimensions when combined with the SP-YE)

VARIATIONS

NAME	MODEL NO.
TORETTA A (for 0° flange)	SR-WA5AA
TORETTA B (for 5° flange)	SR-WA5AB
TORETTA C (for D.SUITE)	SR-WA5AC

LIBRO

A magazine stand with service table allows customers to stay in the styling chair more comfortably.

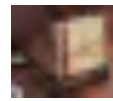


SR-RW

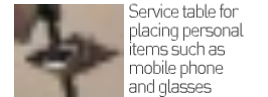
W675xD357xH947mm
MAGAZINE HOLDER: LINDEN (URETHANE COATING)
FRAME / SERVICE TABLE: STEEL (POWDER COATING)
CASTER: URETHANE



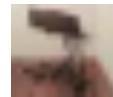
Magazine holder that can be adjusted to any angle according to the customer's height and preference



Includes a rack that can easily hold magazines.



Service table for placing personal items such as mobile phone and glasses



Stackable and enables space-saving storage

HAIR DYE TRAY WAGON AF-7

Removable trays enable easier work.



MY-AF-7 [BLACK] MY-1038
W460xD440xH860mm
FRAME: POLYETHYLENE COATING WITH HAIR COLOUR CUPS (2 PCS.), TRAY (NO SEPARATION), BRUSH CUP & PLASTIC WRAP HOLDER

MN01 WAGON

SR-MN01
W520xD300xH830mm
FRAME: STAINLESS
DEPTH OF THREE TRAYS: 25mm

MN02 WAGON

SR-MN02
W520xD300xH830mm
FRAME: STAINLESS
DEPTH OF TWO TRAYS: 25mm

MN03 WAGON

SR-MN03
W455xD300xH860mm
FRAME: STAINLESS
DEPTH OF THREE TRAYS: NIL

TBM-2001K



SR-K2001A [WHITE]
SR-K2001B [BLACK]
W520xD350xH865mm
FRAME: POLYETHYLENE COATING

TBM-2002K



SR-K2002A [WHITE]
SR-K2002B [BLACK]
W440xD340xH865mm
FRAME: POLYETHYLENE COATING

A-4K



SR-KA4A [WHITE]
SR-KA4B [BLACK]
W520xD420xH900mm
FRAME: POLYETHYLENE COATING WITH BACK POCKET

A-5K



SR-KA5A [WHITE]
SR-KA5B [BLACK]
W520xD380xH870mm
FRAME: POLYETHYLENE COATING WITH BACK POCKET, HAIR COLOUR CUP HOLDER

A-8K



SR-KA8A [WHITE]
SR-KA8B [BLACK]
W425xD330xH850mm
FRAME: POLYETHYLENE RESIN WITH BACK POCKET

TROLLEYS

D-GALLEY A



SR-DGA
W562xD310-470xH916mm
FRAME: STAINLESS
TOP PLATE: STAINLESS
*Two trays are removable.

D-GALLEY S



SR-DGS
W562xD310-635xH916mm
FRAME: STAINLESS
TOP PLATE: STAINLESS
*Two trays are removable.

Holders for two hair colour cups and a hand dryer
*Hand dryer and hair colour cups are not included.



Hand mirror holder
*Hand mirror is not included.



Drawer (SR-DGS only)



THEIA WAGON



SR-WA3AMNN
W520xD382xH905mm
SIDE PANEL COLOUR: NATURAL BROWN [MN]
*Three trays are removable.

COLOUR VARIATIONS

WHITE [MW]
NATURAL BROWN [MN]

Hand mirror holder



*Hand mirror is not included.
*Picture shows white side panel.

CANDY



SR-CDRN
W620xD620xH1124mm
CASTER COLOUR: RED [R], WHITE [W]

CRYSTAL WAGON 1



MY-CVC1-Y [YELLOW] MY-2014
MY-CVC1-C [CLEAR] MY-2015
W425xD285xH860mm
FRAME: CHROME

CRYSTAL WAGON 22



MY-CVC22-Y [YELLOW] MY-2017
MY-CVC22-C [CLEAR] MY-2018
W460xD285xH860mm
FRAME: CHROME

T-3 DELUXE K



SR-K030A [WHITE]
SR-K030B [BLACK]
W490xD325xH860mm
FRAME: CHROME

ESTHE WAGON N2



BM-EEWN2
W495xD300xH860mm

WAGON A



BM-760A2
W590xD350xH840mm

WOODY WAGON ORIGINAL TYPE



SR-WVB
W451xD330xH850mm
NATURAL FANCY PLYWOOD [OAK], WITH TRAY & BASKET [BLACK]

SUPPLY WAGON



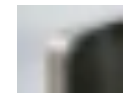
SR-916B [BLACK] MY-2009 E
W305xD400xH815mm
WITH SHELF FOR STORING TOWELS AND USED TOWEL CONTAINER

ST STACKS N



SR-STSTKN MY-2013
W500xD400xH865mm
TRAY: STAINLESS
FRAME: POLYETHYLENE COATING
*Two trays can be folded for storage.

Rubber moulding that will not injure the hands



When folded



STACKS 21



SR-STK21W [WHITE] MY-2011
SR-STK21B [BLACK] MY-2012
W300xD400xH865mm
FRAME: POLYETHYLENE COATING
*Two trays can be folded for storage.

NE WAGON A



NA-NEWG A
W490xD292xH820mm

NE WAGON B



NA-NEWG B
W490xD292xH820mm
FRAME: MAT COATING WITH TWO BOWLS



RICHE WAGON → P.41



YUME WAGON → P.25



NAIL COUNTER & WAGON FINA → P.42

*The indicated dimensions are external dimensions.

MIRRORS

R.A.F MIRROR



DOUBLE-SIDED
SELF-STANDING
UF-M6AB/UF-F6AB
W959×D564×H1672mm

SINGLE-SIDED
SELF-STANDING
UF-M6AA/UF-F6AA
W959×D406×H1672mm

DRESSER MIRROR



DOUBLE-SIDED
SELF-STANDING
UF-DWBE DB/
UF-DWME DB
W900×D400×H1750mm
COLOUR: DARK BROWN [DB]

SINGLE-SIDED
SELF-STANDING
UF-DSSBE DB/
UF-DSSME DB
W900×D400×H1750mm
COLOUR: DARK BROWN [DB]

★Service outlet available only in 100V

THEIA MIRROR



DOUBLE-SIDED
SELF-STANDING
UF-D3BM/UF-D3BF/
UF-D3ACMWx2
W808×D540(TOP BOARD)
×H1650mm
TOP BOARD: WHITE [MW]

SINGLE-SIDED
SELF-STANDING
UF-D3AM/UF-D3AF/
UF-D3ACMN
W730×D358(TOP BOARD)
×H1650mm
TOP BOARD: NATURAL BROWN [MN]

SINGLE-SIDED
WALL MOUNT
UF-D3CM/UF-D3CF/
UF-D3ACMW
W730×D286(TOP BOARD)
×H1657mm
TOP BOARD: WHITE [MW]

COLOUR VARIATIONS —
(top board)
WHITE [MW]
NATURAL [N]
NATURAL BROWN [MN]

MOSAIC MIRROR



UF-M4A
W766×D37×H1056mm

OLDIE MIRROR



UF-M3D
W600×D50×H1000mm

This mirror frame is made from old wood procured and selected by a specialist. It is a reproduction of old wood made to suit a modern salon.

DUX →P.19

SPITFIRE MIRROR



UF-M3E
W600×D26×H1100mm

This mirror matches the design of the chair and was born from the same concept. When used as a set, it dramatically transforms the atmosphere.

SPITFIRE →P.19

MT MIRROR



WALL MOUNT TYPE
UF-MTMRB
W680×D40×H900mm
MATERIAL: MELAMINE
FACING PLATE
COLOUR: ROSE BROWN [RB]

COLOUR
VARIATIONS —
ROSE
BROWN [RB]
NATURAL [N]

BOX MIRROR



FRAMELESS VERSION
UF-MK/EA-SC
W700×D125×H1000mm
W500×D120×H600mm (STORAGE BOX)

STORAGE BOX: STAINLESS
The storage box can hold hair cosmetics
and towels, and the sliding holder
for hand dryer can be easily pulled out.

OHM II

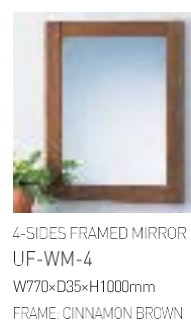


DOUBLE-SIDED
SELF-STANDING
UF-F0102D
(UF-F0102D/EA-U0100D×2)
W800×D540×H1700mm

WOODY MIRROR



2-SIDES FRAMED MIRROR
UF-WM-2
W770×D35×H1000mm
FRAME: CINNAMON BROWN



4-SIDES FRAMED MIRROR
UF-WM-4
W770×D35×H1000mm
FRAME: CINNAMON BROWN

STACK MIRROR



SINGLE SIDED
SELF-STANDING
UF-1070
W650×D450×H1400mm



CLASSIC MIRROR →P.30



STANDARD MIRROR →P.31



SALON PHOTO GALLERY

